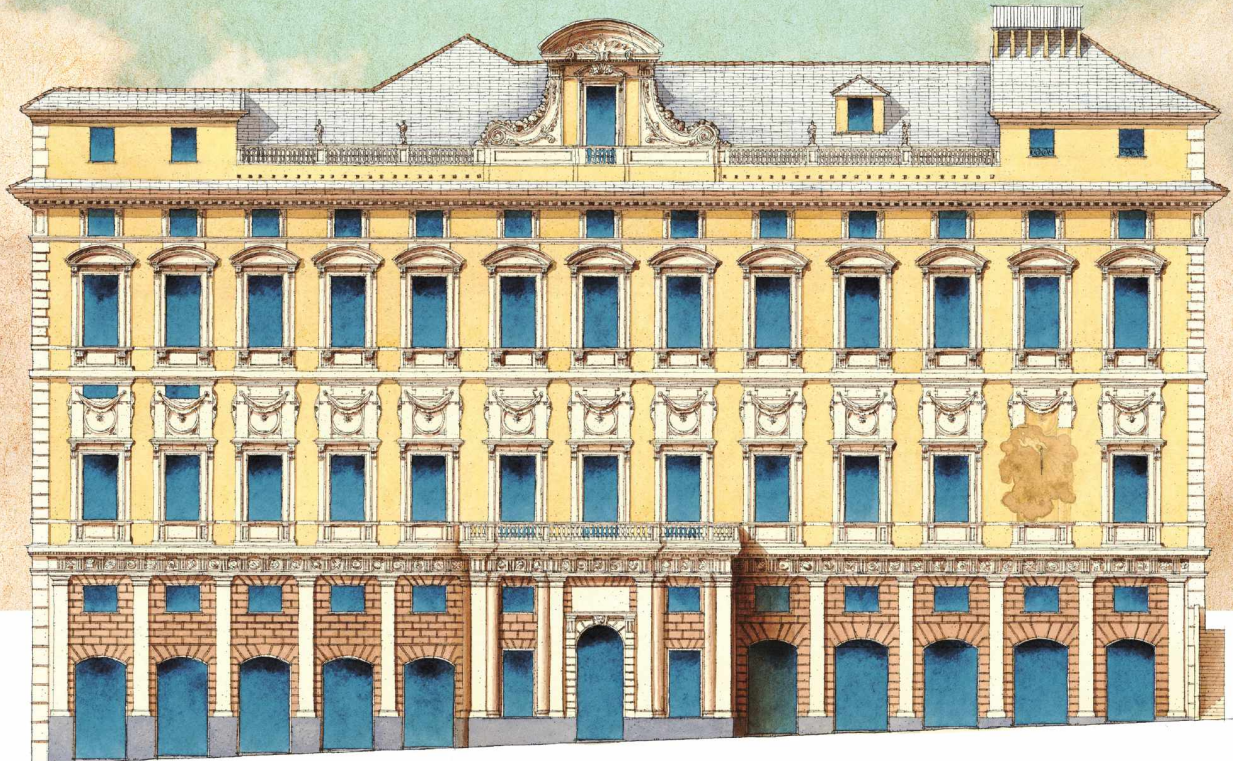


PALAZZO DELLA



MERIDIANA

IL PARTICOLARE CHE FA LA DIFFERENZA
The Detail that makes the Difference



capurro®
DAL 1901 RICEVIMENTI
QUANDO C'È UNA STORIA





PALAZZO DELLA MERIDIANA E I SUOI SALONI

Palazzodella Meridiana and its Salons



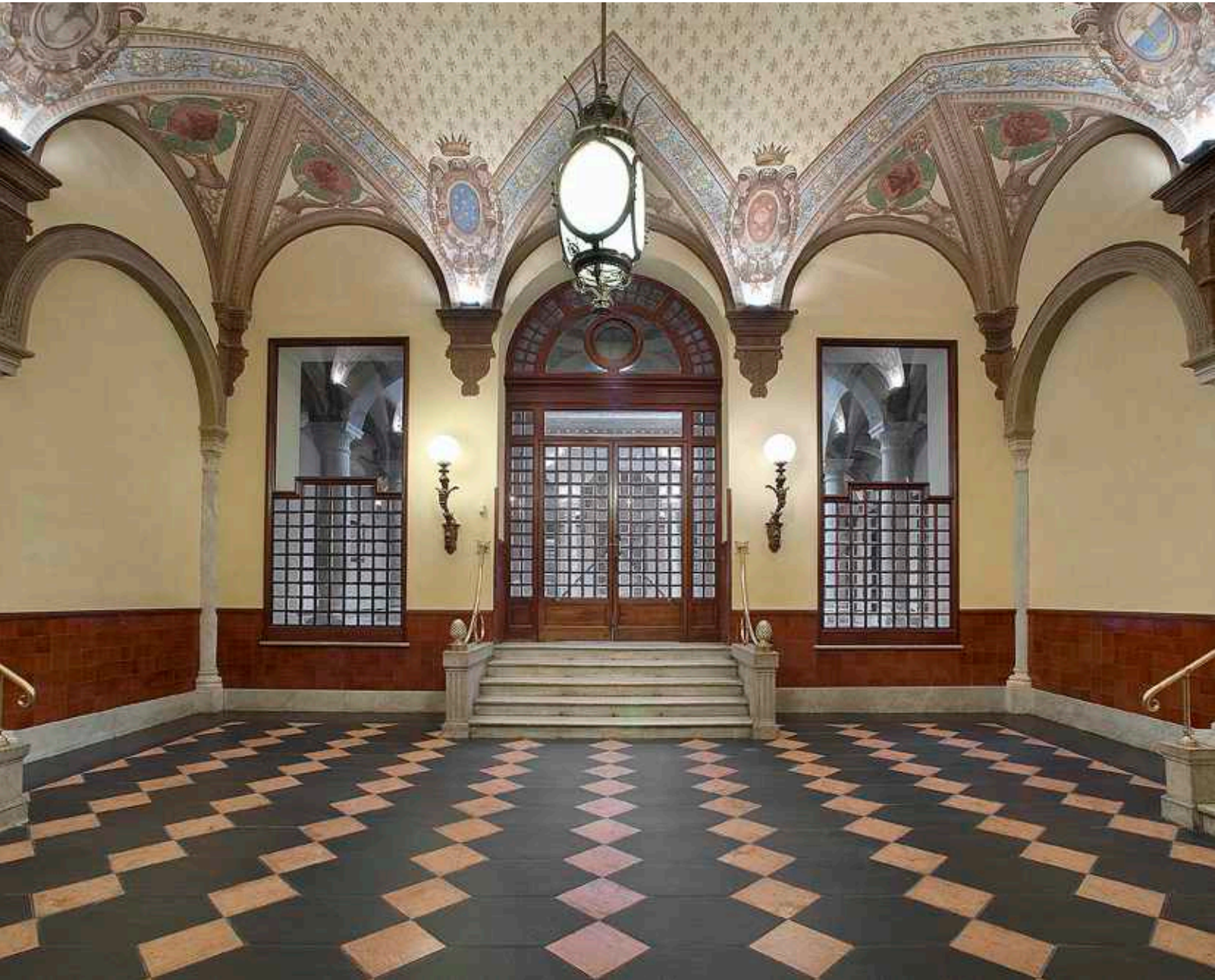
capurro[®]
DAL 1901 RICEVIMENTI
QUANDO C'È UNA STORIA



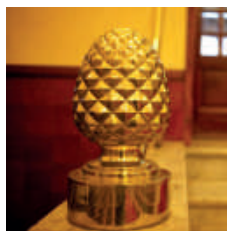
ATRIO DI SAN FRANCESCO

Atrium of San Francesco

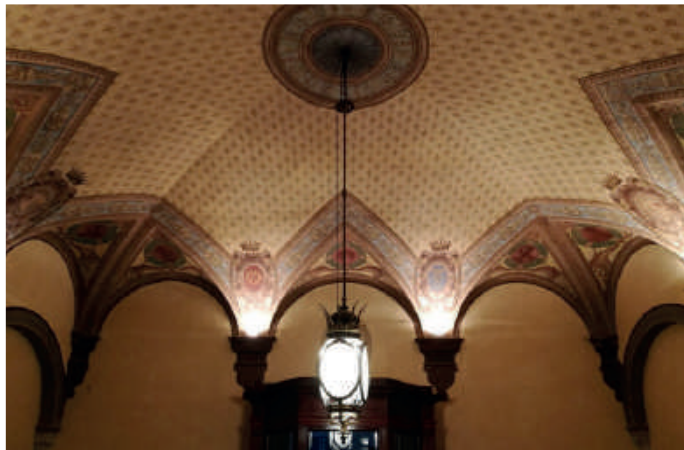
secondo piano second
piano floor



Sala di ingresso al palazzo con stemmi e simboli di inizi del '900 affrescati da Nicola Mascialino su committenza di Gino Coppedè.



Lobby of the building with coats of arms and symbols from the beginning of the twentieth century, frescoed by Nicola Mascialino and commissioned by Gino Coppedè.



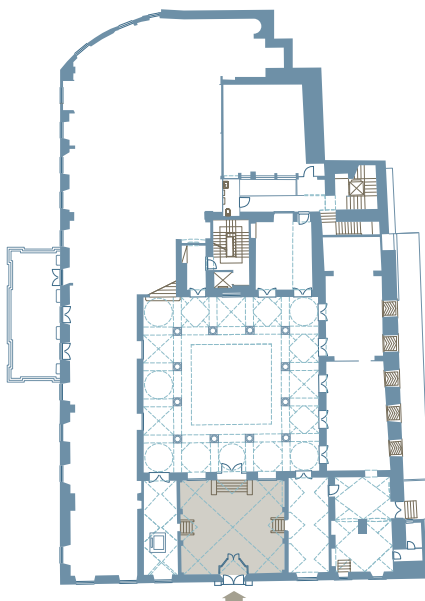
Atrio di San Francesco

area mq **38**

dimensioni mt **6,17 x 6,20**

altezza mt **6,60**

capacità massima persone **15**



Atrium Of San Francesco

space in mq **38**

perimeter in mt **6,17 x 6,20**

height in mt **6,60**

maximum delegates capacity **15**



SALA DEL COLONNATO

Colonnade Hall

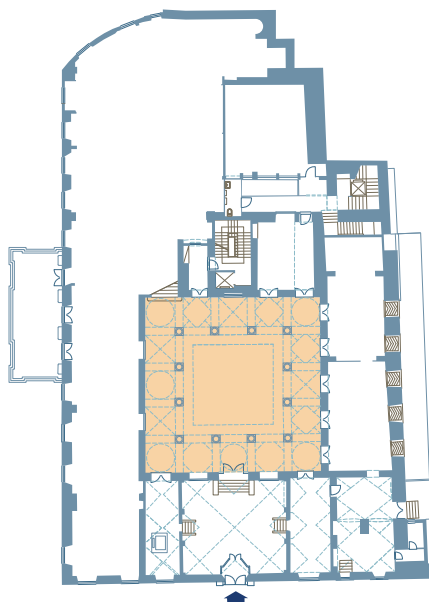
secondo piano second floor
piano floor



Atrio coperto progettato da Coppedè circondato da colonne e volte affrescate da Nicola Mascialino con elementi naturalistici. Nello splendido lucernario liberty a vetri colorati campeggiano gli stemmi di varie città italiane. Ideale per meeting ed esposizioni temporanee.



Covered atrium designed by Coppede surrounded by columns and frescoed vaults with naturalistic features by Nicola Mascialino. The coats of arms from several Italian cities stand out in the splendid stained glass Liberty skylight. This room is ideal for meetings and makeshift exhibits.



Sala del Colonnato

superficie mq **272**
dimensioni mt **16,50 x 16,50**
altezza mt **3,70**



200



130



60

Colonnate Hall

surface in mq **272**
perimeter in mt **16,50 x 16,50**
height in mt **3,70**

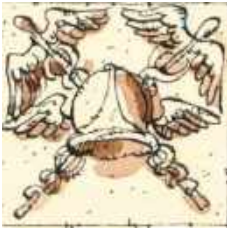


180



220





SALA NOVECENTO

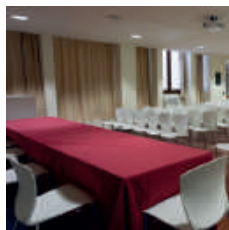
Twentieth Century Hall

terzo
piano

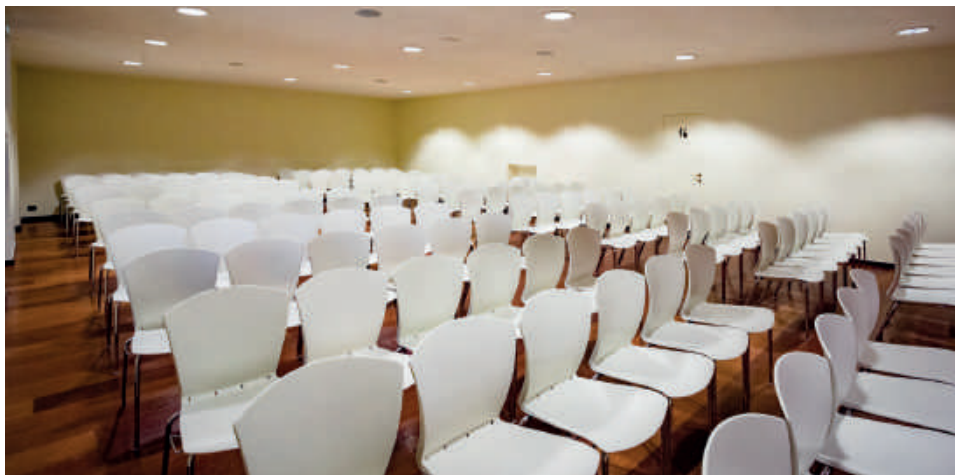
third
floor



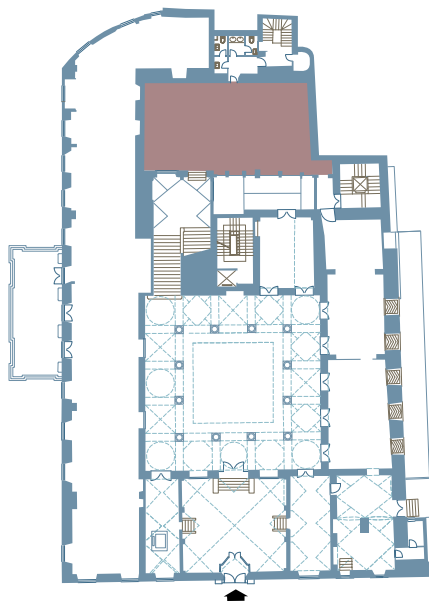
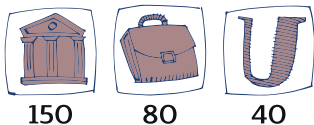
Moderna e insonorizzata, con amplificazione e videoproiezione è la sala ideale per conferenze e per concerti.



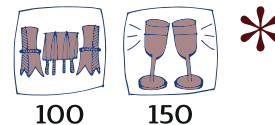
A modern, soundproof room equipped with PA system and video projector makes this the ideal place for conferences or concerts.



Sala Novecento
area mq 127
dimensioni mt 15,40 x 8,30
altezza mt 2,70



Twentieth Century Hall
space in mq 127
perimeter in mt 15,40 x 8,30
height in mt 2,70





GIARDINO Garden

quarto fourth
piano floor



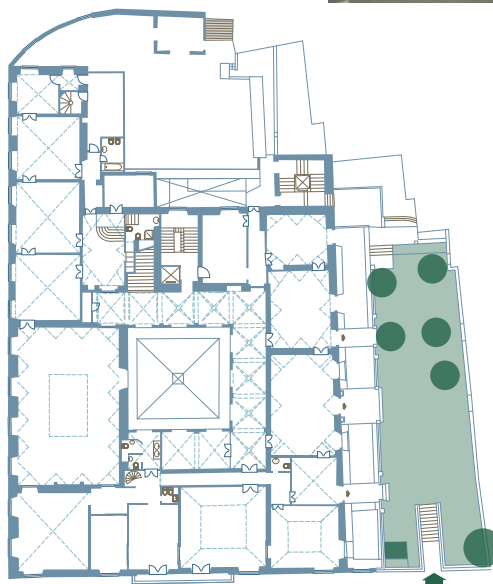
Vi si accede da salita San Francesco ed è in comunicazione con quattro sale: Calvi, Neoclassico, Ardesia e Rosa. Pavimentato in ghiaio naturale, conserva il portale in marmo.



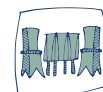
The entrance to this part of the building is up the San Francesco hill. It leads to four other rooms: Calvi Hall, Neoclassic Hall, Slate Hall and Pink Hall. It is paved in natural gravel and still has its marble portal.



Giardino
superficie mq **202**
dimensioni mt **23,8 x 8,50**



Garden
surface in mq **202**
perimeter in mt **23,8 x 8,50**



170



190





SALA CALVI

Calvi Hall

quarto fourth
piano floor



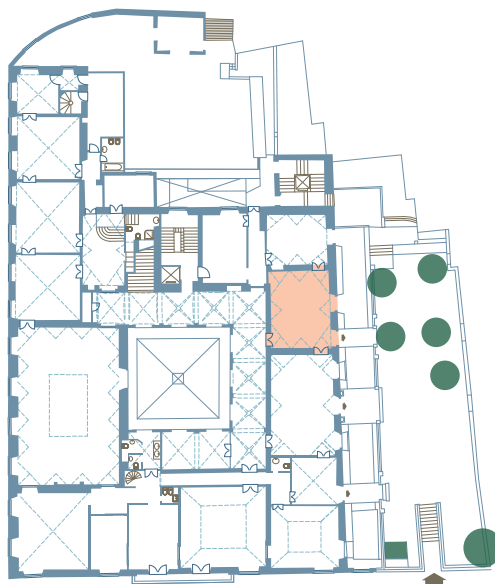
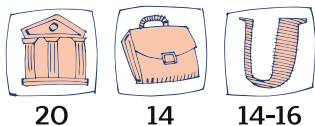
Sala con volta a padiglione ed affreschi del XVI secolo di Lorenzo Calvi. Ha accesso diretto al giardino.



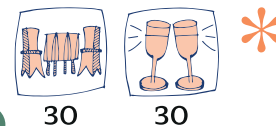
Room with pavilion vault and sixteenth-century frescoes by Lorenzo Calvi. This room opens directly onto the garden.



Sala Calvi
 superficie mq 41
 dimensioni mt 7,40 x 5,60
 altezza mt 4,30



Calvi Hall
 surface in mq 41
 perimeter in mt 7,40 x 5,60
 height in mt 4,30





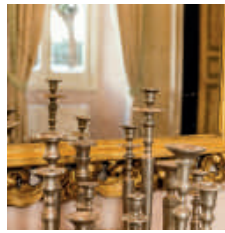
SALA NEOCLASSICO

Neoclassic Hall

quarto fourth
piano floor



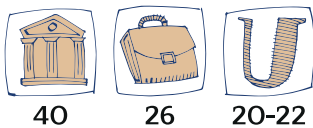
Sala ornata da stucchi e lesene.
 Pavimento del '700 in graniglia genovese.
 La sala era uno dei tre ingressi al palazzo.
 Ha accesso diretto al giardino.



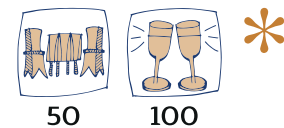
Room decorated with stucco, pilasters and a
 Genoese grit floor from the eighteenth-century.
 This Hall was one of the three entrances
 to the villa and has direct access to the garden.



Sala Neoclassico
 superficie mq **58**
 dimensioni mt **9,70 x 6**
 altezza mt **4,30**



Neoclassico Hall
 surface in mq **58**
 perimeter in mt **9,70 x 6**
 height in mt **4,30**





SALA ARDESIA

Slate Hall

quarto fourth
piano floor



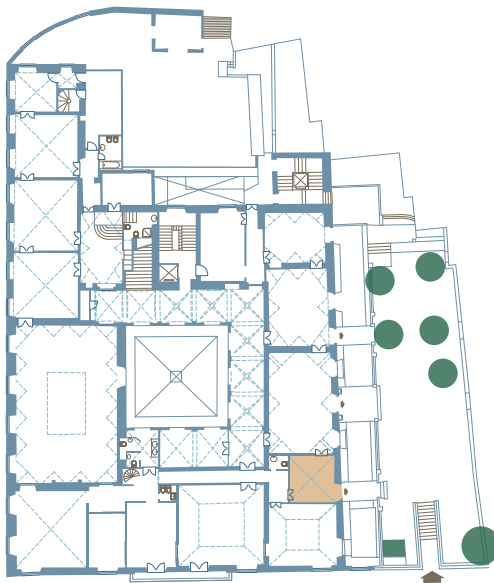
Raccolto salottino con pavimento in ardesia e tozzetti in marmo bianco ha accesso diretto dal giardino.



Cozy sitting room with slate floor and white marble small sized tiles. This room opens directly onto the garden.



Sala Ardesia
superficie mq **18**
dimensioni mt **4,40 x 4,20**



Ardesia Hall
sur ce in mq **18**
perimeter in mt **4,40 x 4,20**



SALA ROSA

Pink Hall

quarto fourth
piano floor



Sala dell'ala settecentesca del palazzo con pavimento in graniglia e stucchi a soffitto .



Room in the eighteenth-century wing of the building with a granolithic floor and ceiling stuccoes.



Sala Rosa
superficie mq **38**
dimensioni mt **5,90 x 6,50**
altezza mt **4,40**



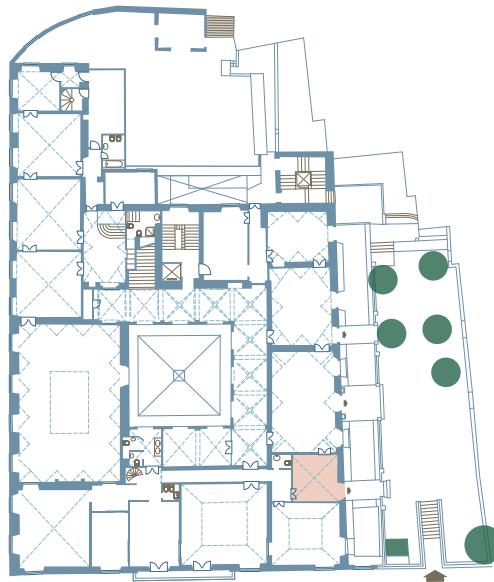
25



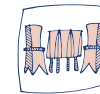
14



18



Pink Hall
surface in mq **38**
perimeter in mt **5,90 x 6,50**
height in mt **4,40**



30



40





SALA DEL CAMINO

Fireplace Hall

quarto fourth
piano floor



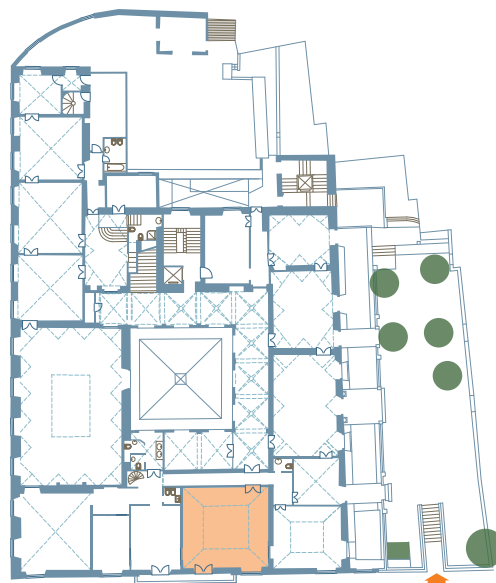
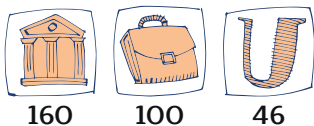
Delizioso ambiente dai toni romantici, con un camino decorato e delicati stucchi policromi, dominano i cromatismi del rosa antico e dell'oro. Il pavimento in graniglia genovese settecentesca è impreziosito da piccoli inserti in corallo.



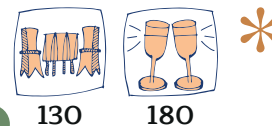
Delightful atmosphere in romantic tones with a decorated fireplace and delicate polychrome stuccoes. Emphasis on the colors antique rose and gold dominate the surroundings. The eighteenth-century Genoese grit floor is embellished with small coral inserts.



Sala Luca Cambiaso
 superficie mq 144
 dimensioni mt 15 x 9,60
 altezza mt 6



Camino Hall
 surface in mq 144
 perimeter in mt 15 x 9,60
 height in mt 6





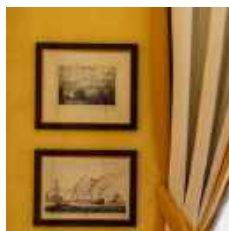
SALA GIALLA

Yellow Hall

quarto fourth
piano floor



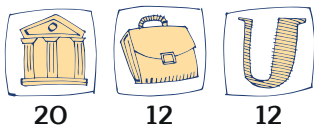
Ambiente raccolto con pavimento
in graniglia alla genovese
ideale per piccole riunioni e meeting.



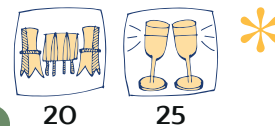
Snug environment with Genoese grit floor.
This room is ideal for small gatherings and
meetings.

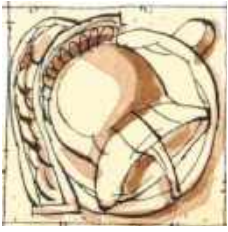


Sala Gialla
superficie mq 27
dimensioni mt 4,80 x 5,70
altezza mt 4,26



Yellow Hall
surface in mq 27
perimeter in mt 4,80 x 5,70
height in mt 4,26





SALA ROSSA

Red Hall

quarto fourth
piano floor



Affrescato dal Coppedè con splendido pavimento in griglia alla genovese.
Si affaccia sulla corte interna.



Frescoed by Coppedè with a splendid floor in Genoese grid, this room overlooks the internal courtyard.



Sala Rossa
superficie mq 23
dimensioni mt **3,60 x 6,50**
altezza mt 3,50



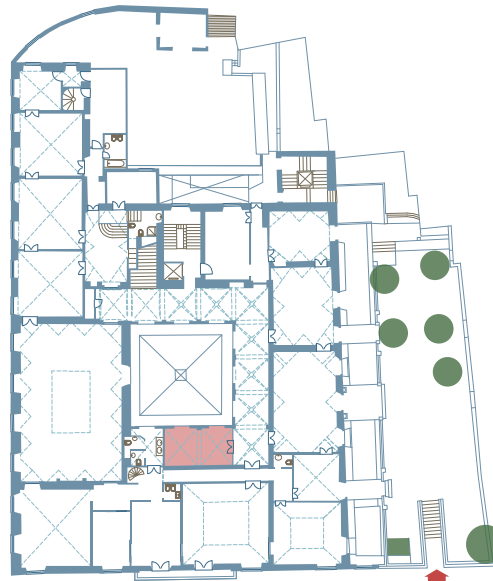
15



10



10-12



Red Hall
surface in mq 23
perimeter in mt **3,60 x 6,50**
height in mt 3,5

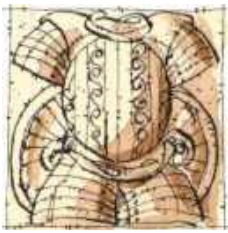


20



20





GALLERIA Gallery

quarto fourth
piano floor



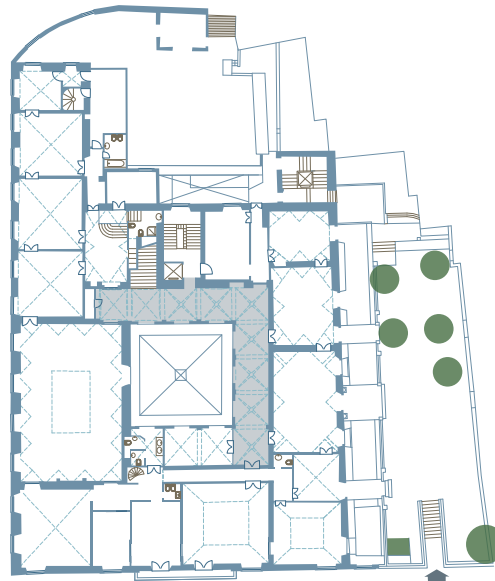
Luminosa e ornata da delicate decorazioni cinquecentesche in colore pastello ritrovate durante il restauro, si affaccia sul lucernaio del secondo piano. Ha accesso diretto alla Sala Calvi, alla Sala Neoclassico e al Salone Cambiaso.



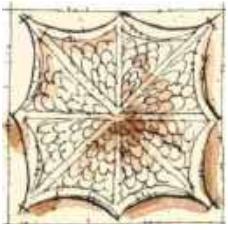
Bright and adorned with delicate sixteenth-century decorations in pastel colors found during the restoration, this room gives onto the skylight on the second floor. It has direct access to the Calvi room, the Neoclassic room and the Cambiaso room.



Galleria
superficie mq 94



Gallery
surface in mq 94



SALA ARAZZI Tapestry Hall

quarto fourth
piano floor



Splendidi arazzi della manifattura di Bruxelles decorano la pareti di questa sala. Soffitto e stucchi settecenteschi e pavimento in graniglia genovese.



The walls of this room are decorated with magnificent tapestries crafted in Brussels, eighteenth-century ceiling stuccoes and a Genoese grit floor.



Sala Arazzi
 superficie mq **48**
 dimensioni mt **7,20 x 6,70**
 altezza mt **5**



30



20



20-22



Tapestry Hall
 surface in mq **48**
 perimeter in mt **7,20 x 6,70**
 height in mt **5**

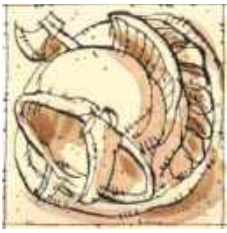


40



50





SALONE CAMBIASO

Cambiaso Salon

quarto fourth
piano floor



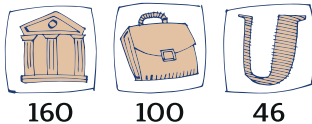
Grandioso salone di rappresentanza con decorazioni del '500 a soffitto stucchi eseguiti da Antonio da Lugano su disegno de il Bergamasco. Le lunette e il grande affresco, di Luca Cambiaso, riportano storie di Ulisse. Camino monumentale del Della Porta.



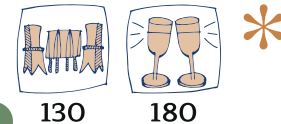
Magnificent reception hall with sixteenth-century stucco ceiling decorations by Antonio da Lugano based on a design by il Bergamasco. The lunettes and the large fresco by Luca Cambiaso show stories of Ulysses. The monumental fireplace is by Della Porta.

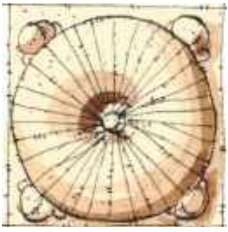


Salone Cambiaso
 superficie mq 144
 dimensioni mt 15 x 9,60
 altezza mt 6



Cambiaso Salon
 surface in mq 144
 perimeter in mt 15 x 9,60
 height in mt 6





SALA DELLE CORNICI

Hall of Frames

quarto fourth
piano floor



Sala comunicante con il Salone del Cambiaso, arricchita da Arazzi della manifattura di Bruxelles con disegni boschi. Decorata a soffitto con cornice in stucco ottocentesca.

This room, which opens onto the Cambiaso Salon, is enriched with woodland pattern tapestries crafted in Brussels. Ceiling decorations are a nineteenth-century stucco cornice.

Sala delle Cornici

superficie mq **38**
dimensioni mt **6,20 x 6**
altezza mt **4,30**



25



14

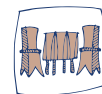


18



Hall of the Frames

surface in mq **38**
perimeter in mt **6,20 x 6**
height in mt **4,30**



40



40





SALA IMPERIALE

Imperial Hall

quarto fourth
piano floor



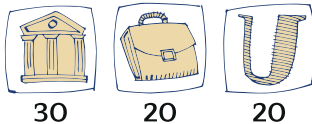
Illuminata da un maestoso lampadario impero a mongolfiera in bronzo dorato e cristalli, sala ideale per piccole cene e meeting.



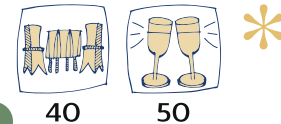
Lit by an imposing balloon-shaped chandelier in gilded bronze and crystals, this is the ideal hall for more intimate dinners and gatherings.

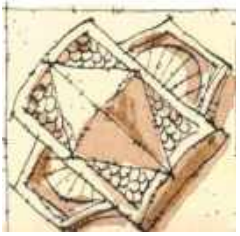


Sala Imperiale
 superficie mq 40
 dimensioni mt 6,70 x 6
 altezza mt 4,30



Imperial Hall
 surface in mq 40
 perimeter in mt 6,70 x 6
 height in mt 4,30





SALA VERDE Green Hall

quarto fourth
piano floor



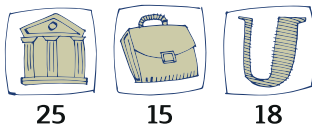
Sala raccolta e funzionale
ideale per piccole riunioni
e meeting di lavoro.



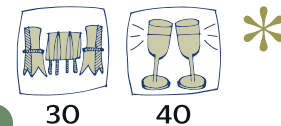
Cozy, functional room
ideal for small gatherings
and business meetings.

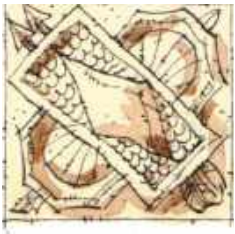


Sala Verde
superficie mq 34
dimensioni mt 5,90 x 5,80
altezza mt 4,40



Green Hall
surface in mq 34
perimeter in mt 5,90 x 5,80
height in mt 4,40





TERRAZZO

CAPPELLA E GIARDINO D'INVERNO

Terrace

Chapel And Winter Garden

quarto fourth
piano floor



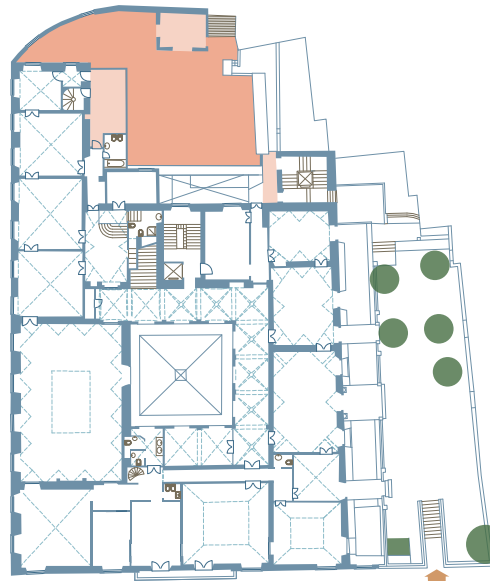
Struttura vetrata di grande luminosità a cui si accede direttamente al terrazzo con vista sui tetti del centro storico di Genova.



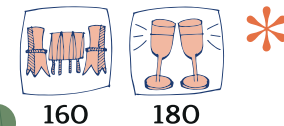
Glazed structure of great brightness which leads directly to the terrace overlooking the roofs of the historical center of Genoa.

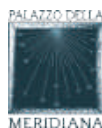


Terrazzo
superficie mq 180



Terrace
surface in mq 180





capurro
DAL 1901 RICEVIMENTI
QUANDO C'È UNA STORIA



LEGENDA

KEY TO SYMBOLS FOR SEATING



Disposizione a teatro
Theatre layout



Disposizione a banchi scuola
Layout for school desks



Disposizione a U
U-shaped



Disposizione per banchetti
For banquets



Disposizione per cocktail
For cocktail parties



Palazzo della Meridiana

Salita San Francesco 4 16124 Genova +39 010 2541996

eventi@palazzodellameridiana.it www.palazzodellameridiana.it



